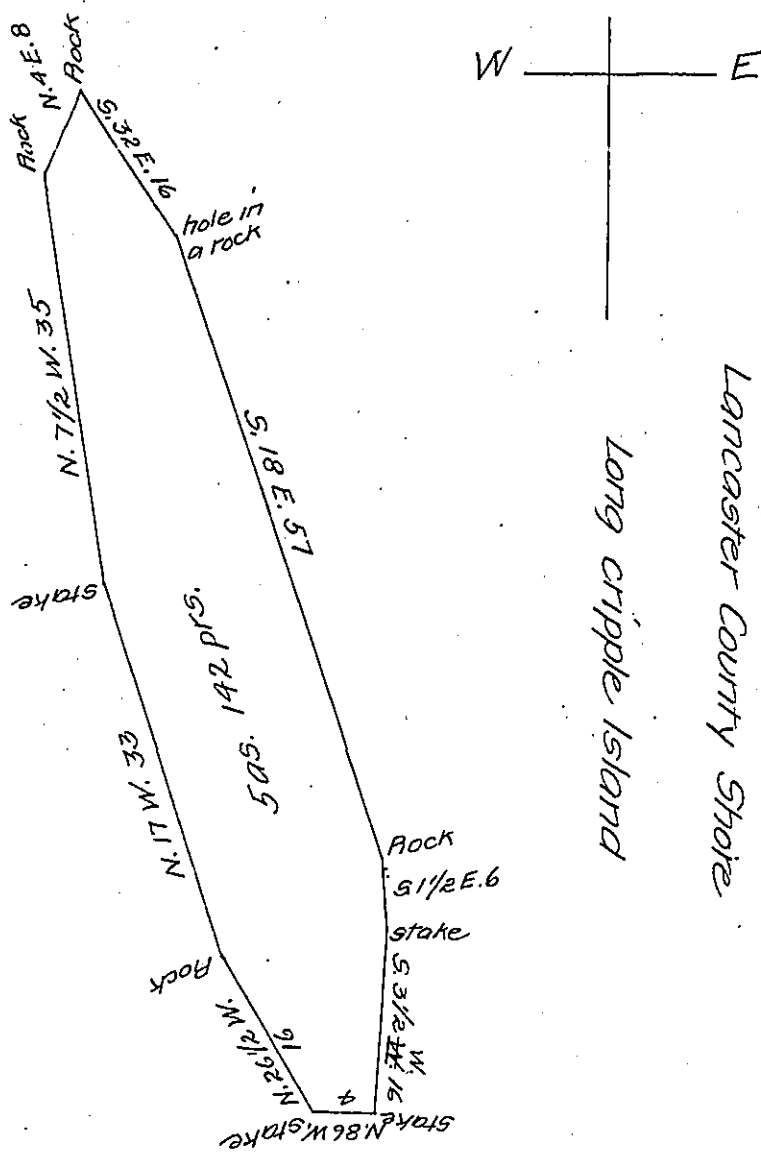


York County Shore
High ridge Island



Long Cripple Island
Lancaster County Shore

Draught of a certain Island in the River Susquehanna, in the township of Conestoga, Lancaster County, called Big Bottasae Island, containing 5 acres and 142 perches, strict measure, ^{50.12500} Aug. 13. th. 1851, under an application in writing dated the 28th. day of June 1851 from the Surveyor Genl. office and returned in pursuance of a Warrant dated the 1st. day of July 1853 granted to Christian Sourbeer & others.

Henry H. Kurtz, Sur.
Lancaster county.

To J. Porter Brawley Esqr.
Surveyor General.

IN TESTIMONY that the above is a copy of the original remaining on file in the Department of Internal Affairs of Pennsylvania, made conformably to an Act of Assembly approved the 16th day of February, 1833, I have hereunto set my Hand and caused the Seal of said Department to be affixed at Harrisburg, this sixteenth day of March 1907

Laac P. Brown
Secretary of Internal Affairs.